

**CREDIT OPINION**

17 February 2025

Update

Send Your Feedback

**RATINGS**

**ASR Re Limited**

Domicile	HAMILTON, Bermuda
Long Term Rating	Baa1
Type	Insurance Financial Strength - Fgn Curr
Outlook	Stable

Please see the [ratings section](#) at the end of this report for more information. The ratings and outlook shown reflect information as of the publication date.

**Contacts**

**Brandan Holmes** +44.20.7772.1605  
VP-Sr Credit Officer  
brandan.holmes@moodys.com

**Jose Pasache** +49.69.86790.2171  
Ratings Associate  
jose.pasache@moodys.com

**Salman Siddiqui** +971.4.237.9503  
Associate Managing Director  
salman.siddiqui2@moodys.com

**Antonello Aquino** +44.20.7772.1582  
MD-Financial Institutions  
antonello.aquino@moodys.com

**CLIENT SERVICES**

Americas 1-212-553-1653

Asia Pacific 852-3551-3077

Japan 81-3-5408-4100

EMEA 44-20-7772-5454

**ASR Re Limited**

Update to credit analysis

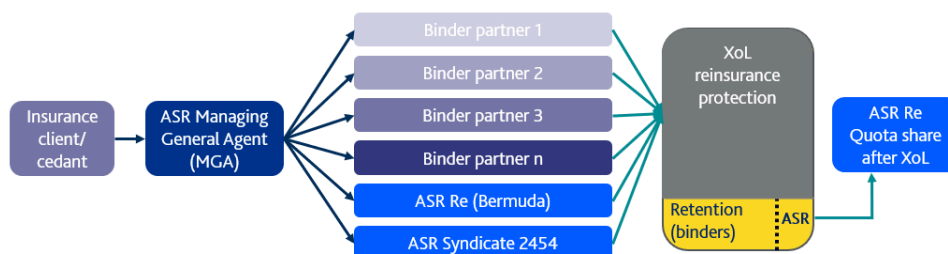
**Summary**

ASR Re Limited's (ASR Re) Baa1 IFSR reflects (i) its growing relevance and client base in the specialty and corporate insurance market in Africa, (ii) strengthened franchise of the broader ASR Group including its Lloyd's syndicate, (iii) strong capital adequacy and low risk invested assets exposure, and (iv) strong underwriting profitability to date.

These strengths are partially offset by (i) ASR Re's operational and underwriting execution risk associated with rapid growth of the business and the relatively small portfolio of insured exposures that increases concentration risk, and (ii) ASR Re's focus on Africa which exposes it to a high proportion of clients in countries with higher risk operating environments, a feature that increases its product risk but is to a great extent compensated for by strong pricing, risk selection and diversification.

ASR's business model is centered on leveraging the capacity of other reinsurers, both the binder capacity partners and a panel of retrocession partners alongside its own reinsurer, ASR Re. Its Lloyd's syndicate, ASR Syndicate 2454 launched in 2024, sits alongside its binder partners and adds an additional high quality source of capacity. This model enables it to offer a meaningful level of capacity to the market while limiting its own balance sheet exposure. The exhibit below illustrates the typical flow of business for one of the group's insurance transactions, although we note that can differ by product line and region. One of the ASR MGA's originates the transaction with the cedant, often via an insurance broker, and places the risk with ASR's panel of binder capacity partners. The binder capacity partners retain a portion of the risk and cede the remainder to the panel of reinsurers arranged by ASR, which typically takes the form of a \$20 million to \$40 million excess over \$5 million excess-of-loss reinsurance agreement. ASR Re then assumes a 25% quota-share of the binder capacity partners' retention (i.e. 25% of retention up to \$5 million).

Exhibit 1  
**Structure and flow of typical reinsurance transaction**



The above example is shown for a typical PRTC policy written with an African ceding insurer. The transaction structure, exposure limits and reinsurance can vary between product types and region of exposure.

Source: ASR; Moody's Ratings

## Credit strengths

- » Growing relevance and client base in Africa that supports its overall franchise and market position despite its still modest scale,
- » Good business diversification across specialty and corporate business lines and broad geographic diversification within Africa.
- » Financial profile is supported by strong capital adequacy and low risk invested assets exposure, while underwriting profit, to date, has been strong.
- » Financial flexibility benefits from a supportive investor base comprised of large development focused financial institutions.
- » Risk-sharing based business model reduces balance sheet exposure to ASR Re while enabling it to deliver meaningful capacity to its clients.
- » Bermuda domicile and hard-currency invested assets support credit profile relative to some local African reinsurers.

## Credit challenges

- » Still smaller scale relative to the upper tier of reinsurers operating in Africa.
- » Operational and underwriting risk associated with rapid growth that it has already achieved and has planned for upcoming years.
- » The relatively low number of insured exposures that increases concentration risk.
- » Focus on Africa exposes it to a high proportion of clients in countries with higher risk operating environments.
- » Dependence on the continued cooperation of its binder capacity partners and retrocessionaires which exposes it to the cyclicity of the insurance cycle and exogenous events.

## Rating outlook

The stable outlook reflects Moody's view that ASR Re is well positioned to continue growing its business volume while maintaining underwriting discipline and good capital adequacy. The stable outlook further reflects our view that while ASR's business model and structure do not preclude it from reaching a higher rating level in the future, it would need to demonstrate its ability to continue balancing rapid growth with underwriting and operational risk management.

## Factors that could lead to an upgrade

- » Strengthening of its market position evidenced by achieving business volume growth according to or ahead of plan
- » Maintaining strong underwriting performance with loss ratios remaining at or below 60%
- » Further diversification of its panel of binder capacity providers
- » Reduction in the proportion of receivables and loans relative to cash and invested assets.

## Factors that could lead to a downgrade

- » Deterioration in underwriting performance, with combined ratios consistently above plan
- » Weakening of ASR Re's regulatory capital position, with a BSCR ratio consistently below 200%
- » Material loss in diversification or quality of binder capacity or retrocession partners
- » A material increase in asset risk, with for example, an elevated level of high risk assets or receivables relative to cash and invested assets

This publication does not announce a credit rating action. For any credit ratings referenced in this publication, please see the issuer/deal page on <https://ratings.moody's.com> for the most updated credit rating action information and rating history.

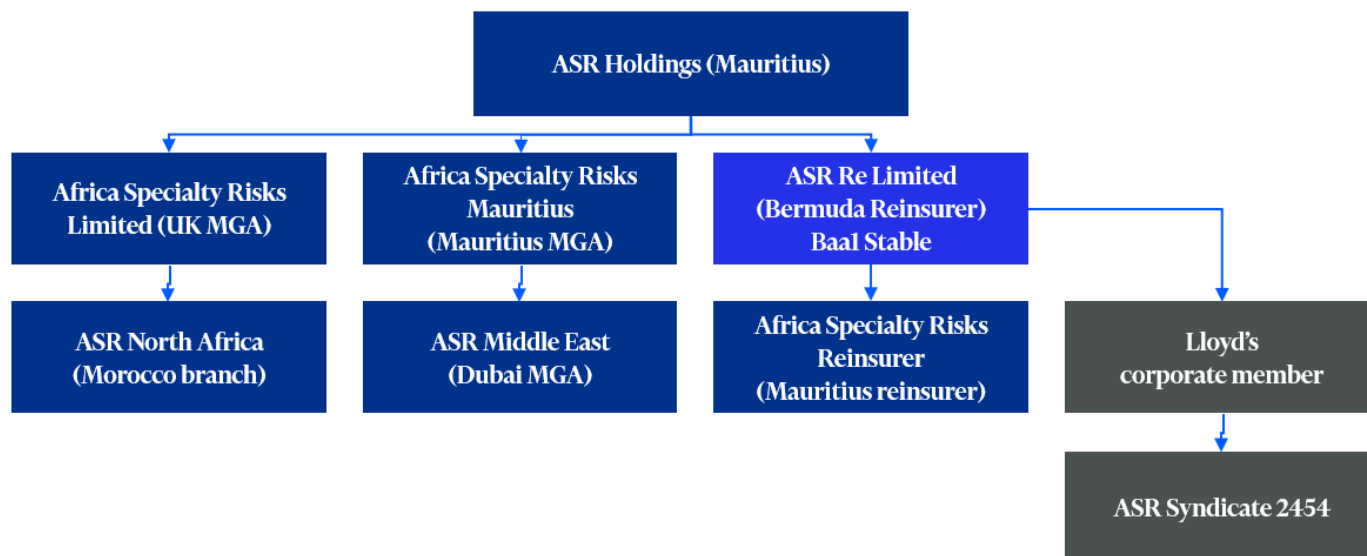
» Significant slowdown in premium growth at the MGA which impedes the group's overall profitability and franchise

## Profile

Africa Specialty Risks (ASR) provides comprehensive, bespoke risk mitigation solutions and facultative reinsurance to local and global customers across the African continent. Africa Specialty Risks Ltd (ASR) operates as a Managing General Agent sourcing capacity for African insurance and reinsurance risks, including through ASR Re Limited (ASR Re) (Bermuda), the group's Bermuda domiciled reinsurer.

Exhibit 2

### ASR Group structure



Source: ASR

## Detailed credit considerations

### Market position, brand & distribution: Growing relevance and client base in Africa supports its market position despite its relatively small scale

ASR Re's market position is supported by its ability to underwrite complex risks and provide meaningful capacity to clients through its MGA and binder capacity partners. The ASR group benefits from strong broker and client relationships across Africa, in part due to management's prior track record of running a successful Africa-focused reinsurer. While the group's premiums - \$139 million and \$72 million GWP in 2023 for the group and ASR Re, respectively - are modest relative to global reinsurers, it has put in place the structure to support strong growth which will strengthen its market position and franchise over time.

A key feature of ASR's business model is its dependence on binder capacity partners and to a lesser extent retrocessionaires. While this dependence presents some risk in terms of continuity of capacity, the group manages this risk through building and maintaining a diverse panel of binder capacity partners and retrocessionaires, and through contractual arrangements with these partners. Furthermore, ASR has been successful in broadening the panel of binder partners.

The launch of the group's Lloyd's syndicate - ASR Syndicate 2454 - in early 2024 will support business volume growth and strengthen its franchise and reputation in the African market. The syndicate adds additional high quality capacity to its binder panel and provides an additional platform for sourcing business directly, some of which will be ceded to ASR Re.

ASR's technical underwriting expertise and strong links between Africa and the London market position it to source and underwrite specialty corporate business that its binder capacity partners do not write, thereby providing a new source of business for them. Over

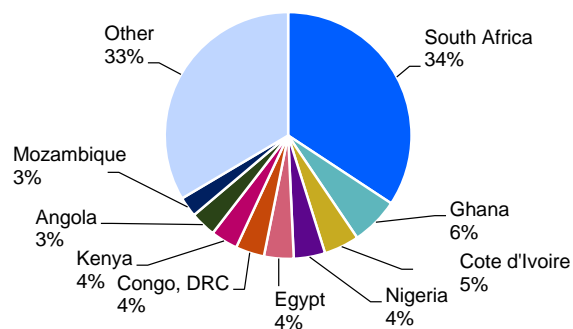
the longer-term, ASR's ability to keep its partners engaged and supportive depends on its underwriting performance and ability to grow profitably.

**Business & geographic diversification: Good product and geographic diversification with focus on Africa**

Geographically, the group is focused on Africa, where it sourced over 90% of its premiums in 2022, albeit that it expects growth in the Middle East, South America and Asia to lead to a slight decrease in the proportion of African business over time. Broad diversification across Africa and a strong position in South Africa's well-developed insurance market help manage its exposure to countries with higher risk operating environments.

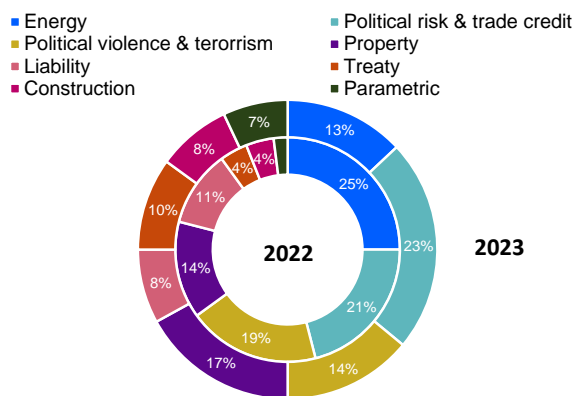
Its product mix is focused on commercial and specialty lines, with political risk and trade credit (PRTC) being its largest line of business, followed by engineering and political violence and terrorism (PVT). Over time, ASR expects to maintain a well-diversified set of product exposures which are well balanced between short and medium tailed lines.

Exhibit 3  
**Geographic mix of gross written premiums**  
 Based on 2022 GWP managed at the ASR group level



Source: Company filings and Moody's Ratings

Exhibit 4  
**Mix of gross written premiums by product**  
 Based on 2023 and 2022 GWP managed at the ASR group level



Source: Company filings and Moody's Ratings

ASR's product and geographic mix exposes it to countries that have high social risks, with potential for products such as political risk and trade credit (PRTC) or political violence and terrorism (PVT), to be impacted by social unrest or political turmoil. This risk is moderated through adherence to risk and exposure aggregation limits, risk sharing with its partners and growing diversification of its insured book.

**Asset quality: High quality invested assets but receivables balances weigh on overall asset quality**

Asset quality is supported by ASR Re's high quality investment portfolio, with invested assets mainly comprised of US Government bonds and high investment grade corporate debt securities. The reinsurer expects to maintain this high quality, liquid investment profile going forward, albeit with a modest increase in its allocation to investment grade corporate debt as it grows.

However, asset quality is negatively impacted by high premium receivables and a large loan from ASR Re to its affiliated MGA, Africa Specialty Risks UK Limited, which together amounted to around 46% of total assets at year-end 2023 and results in diminished balance sheet liquidity. The group is taking steps to manage down its receivables, the majority of which are from strong counterparties and therefore do not pose significant credit risk, and expects the inter-company loan to be fully repaid in the next two years rising business volumes translate into growing profits and cashflows at the MGA.

**Capital adequacy: Strong capital adequacy and supportive investors**

Based on ASR Re's Bermuda regulatory solvency ratio, its capitalization was strong at year-end 2023, with a BSCR of 317%. The BSCR has decreased from 606% at year-end 2022 as the reinsurer's business volume ramped up. Going forward, we expect ASR Re's BSCR to remain strong relative to the regulatory requirement and compared to peers as organic growth in capital supports business volume growth.

ASR Re has only moderate exposure to natural catastrophe risk, primarily due to its business mix being less focused on cat exposed property, but also because of its excess of loss reinsurance that scales down the gross exposure. That said, the understanding and modeling of natural catastrophe risk in Africa is underdeveloped relative to many larger insurance markets, giving rise to higher uncertainty around the group's exposure, particularly in the light of growing physical climate risk for Africa.

While its business model and risk sharing limit its exposure to a single large natural catastrophe event, ASR Re's key underwriting exposure is to elevated frequency of claim events or an accumulation of losses on multiple risks because of one event. It has in place a good risk and exposure management framework to monitor and manage these exposures and their impact on its capital.

ASR benefits from supportive shareholders that are aligned with its objective of developing African commercial insurance markets through the capacity and expertise it delivers and we expect that its owners will provide capital necessary to support the group's growth and stability, if needed.

#### **Profitability: Strong underwriting profitability, offset by short track record and startup costs at the MGA**

Profitability is supported by ASR's strong underwriting performance to date and the blend of fee income and underwriting profits that will result in strong return on capital at the group level once the business is at scale. Based on the most recent fiscal year, ASR Re reported a net profit, and group passed break-even point as it scaled up. We expect profitability will continue to increase in line with growing business volume.

Specialty commercial insurance in Africa has historically offered good underwriting returns, in part due to the limited availability of this cover. While we expect ASR's more concentrated portfolio of insured exposures to result in some volatility in profits from time to time, our baseline expectation is that ASR's exposure management combined with strong pricing in African markets will support good underwriting profit through the cycle.

That notwithstanding, in the near to medium term, our assessment of ASR Re's profitability is held back by the group's strong growth trajectory, with premiums planned to grow significantly over the next few years, which could give risk to higher underwriting and operating risk execution as the group evolves to manage significantly increased business volume. The group has pulled back a little on growth during 2024 as it focused on securing quality business and also devoted significant management resources to developing and launching the Lloyd's syndicate and other platform related expansion.

#### **Reserve adequacy: Redundancy built into reserve levels but limited track record of data and reserve development**

ASR Re's reserves are set by an internal team of actuaries and opined on by external actuaries as a second review. Reserve risk is moderated by the mix of short and medium tailed business and limited number of claims that allow for more detailed reserve analysis and setting. In addition, the structure of ASR's business model, where its own MGA originates the risk that ASR Re assumes, allows the reinsurer greater visibility into each risk it assumes, compared to more traditional reinsurers that are a step removed from the risk and largely rely on information provided by cedants.

Based on the still limited track record to date, reserves have run off favourably relative to expectations and benefit from the level of redundancy built into reserve estimates. 2024 was the reinsurer's fourth underwriting year, and it has thus far shown strong favourable reserve development on the prior three underwriting years.

However, significant growth on the back of limited claims history and a growing but still modest number of insured exposures increases the risk of unfavourable reserve development. Reserve risk will continue to decrease over time as the company builds more claims data and a longer track record of experience.

#### **Financial flexibility: No leverage and no direct access to public debt and equity markets but supportive investor base**

ASR benefits from strong and supportive investors, including leading African investment firm Helios Investment Partners, and three large development finance institutions. Despite not having direct access to public debt and equity markets, the group's ownership base supports our assessment of its financial flexibility, particularly because of the alignment between ASR's strategy and the investors' development objectives.

The investors have undertaken to provide additional support to the group, as needed, albeit that this support is not of the form that would result in explicit uplift to ASR Re's rating. Moody's noted that continued support from the investor base, including their provision of additional capital to support growth, would further strengthen its assessment of ASR's financial flexibility.

ASR has demonstrated its ability to secure additional capital through obtaining around 70% of the capital required for its Lloyd's syndicate through external investors, including other well respected reinsurance groups. Furthermore, it has been able to bring additional capacity into its binder panel and retrocession group, which is another form of financial flexibility.

#### **Operating environment: Bermuda domicile and hard-currency assets moderate risks arising from weaker operating environments**

ASR operates predominately in African markets, where several countries have weak operating environments characterised by challenges to their economic strength, institutions and governance, and elevated susceptibility to event risk. Furthermore, insurance markets and regulatory oversight remain relatively underdeveloped in some countries, adding to operating risk for insurers.

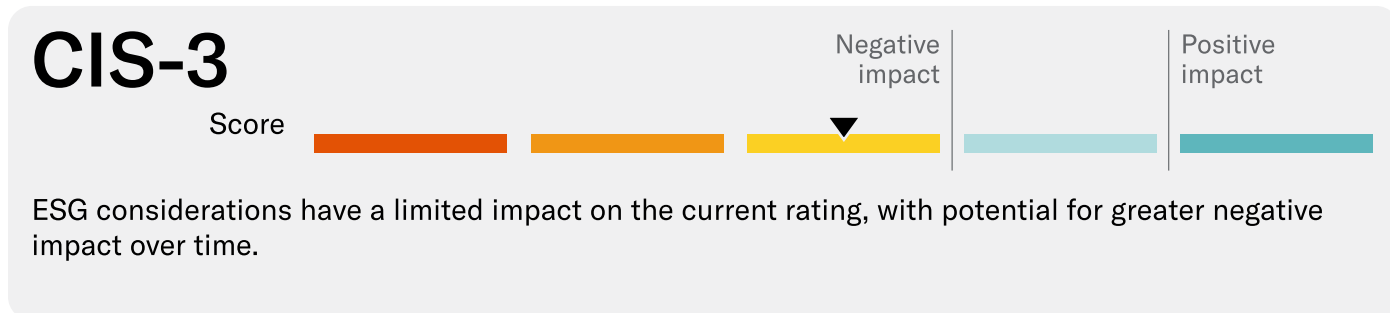
Our assessment of ASR Re's exposure to the operating environment considers its Bermuda domicile and international invested asset profile which reduce its exposure to local operating environments relative to domestic insurers. In addition, ASR Re's broad diversification across countries and exposure to more sophisticated commercial clients and cedants means that it is less impacted by the constraints of underdeveloped insurance markets and domestic regulation that is often focused on retail insurance products.

### ESG considerations

ASR Re Limited's ESG credit impact score is CIS-3

Exhibit 5

#### ESG credit impact score

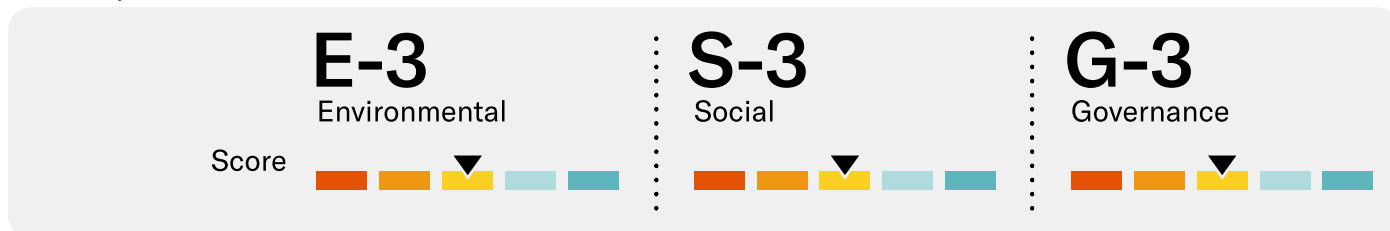


Source: Moody's Ratings

ASR Re's **CIS-3** indicates the limited impact of ESG considerations on the current rating, with potential for greater impact over time, mainly due to operational and underwriting execution risk associated with rapid growth of the business which gives rise to moderate governance risk. That notwithstanding, the group's risk management and governance help mitigate its exposure to environmental and social risks, in particular physical climate risk and societal and demographic trends.

Exhibit 6

#### ESG issuer profile scores



Source: Moody's Ratings

#### Environmental

ASR Re faces moderate environmental risks, in particular physical climate risk and carbon transition risks related to these risks being faced by many of the countries where its insured exposures are located and the possible impact on its underwriting risk. For example, the transition to a low carbon economy could have a destabilizing effect on African countries that are hydrocarbon dependent and contribute to higher risk related to political violence and terrorism insurance contracts. Physical climate risk is high in several countries where ASR Re is active and contributes to exposure to extreme weather, albeit that ASR Re does have lower exposure to natural catastrophe risk than its global reinsurance peers. These risks are somewhat mitigated by ASR Re's good diversification of insured exposures, the short-to-medium term duration of these exposures that allows ASR Re to reduce exposure as these risks grow, and access to significant reinsurance capacity to support its own capital.

#### Social

ASR Re is exposed to social risks, both through its own operations and through its insured exposures covering companies in a wide variety of industries and African countries, some of which have significant social risk. ASR Re is specifically exposed to societal and demographic trends through some of its insurance lines, such as political risk and trade credit (PRTC) or political violence and terrorism (PVT), that could be impacted by social unrest or political turmoil. Its exposure to these risks is somewhat mitigated by the diversification of its portfolio, strong underwriting and risk management. In addition, ASR Re benefits from certain demographic and societal trends, such as economic growth and development in Africa, due to its strategic alignment with multilateral development institutions and other stakeholders focused on development on the continent.

### Governance

ASR Re faces moderate governance risk related operational and underwriting execution risk associated with rapid growth of the business, which is reflected in its financial strategy and risk management. Overall, the group benefits from a good risk management framework and a measured and well managed approach to financial and underwriting risk. The group has invested in good quality risk and exposure management data and tools that help it implement its risk framework. Governance is strengthened by its seasoned management team, good board oversight and prudential regulatory supervision by the BMA, which supports its ability to manage the complexity inherent in its business model that combines an MGA, multiple binder capacity providers and affiliated and non-affiliated reinsurers. The group's ownership structure heightens board structure and policy risks due to concentration of control, albeit that the involvement of large development finance institutions and its track record to date suggest that this is a low risk to overall governance.

### Support and structural considerations

Moody's rates ASR Re Baa1 for insurance financial strength, which is in line with the aggregate scorecard outcome.



## Rating methodology and scorecard factors

Exhibit 7

### Rating Factors

Financial Strength Rating Scorecard [1][2]	Aaa	Aa	A	Baa	Ba	B	Caa	ScoreAdj	Score
Business Profile								Ba	Baa
<b>Market Position, Brand, and Distribution (20%)</b>								B	Baa
-Relative Market Share Ratio							X		
-Direct Reinsurance Premiums(or Insurance Revenue)/Gross Premiums Written(or Insurance Revenue)					X				
<b>Business and Geographic Diversification (15%)</b>								Baa	Baa
-Business and Geographic Diversification				X					
Financial Profile								Aa	A
<b>Asset Quality (10%)</b>								Aaa	A
-High Risk Assets % Shareholders' Equity	0.0%								
-Reinsurance Recoverables (or Reinsurance Contract Assets) / Shareholders' Equity	0.0%								
-Goodwill & Intangibles % Shareholders' Equity	8.3%								
<b>Capital Adequacy (20%)</b>								Aaa	A
-Gross Underwriting Leverage	1.1x								
-Gross Natural Catastrophe Exposure									
-Net Natural Catastrophe Exposure									
<b>Profitability (10%)</b>								Baa	Baa
-Return on Capital (5 yr. avg.)				0.5%					
-Sharpe Ratio of ROC (5 yr.)									
<b>Reserve Adequacy (10%)</b>									Baa
-Net Loss Reserves Development / Beginning Net Loss Reserves (7 yr. avg.)									
<b>Financial Flexibility (15%)</b>								A	Baa
-Financial Leverage	0.0%								
-Total Leverage	0.0%								
-Earnings Coverage (5 yr. avg.)					NM				
Operating Environment								Aaa - A	Aaa - A
Preliminary Standalone Outcome								Baa1	Baa1
Other Considerations									
Management, Governance and Risk Management									
Accounting Policy & Disclosures									
Sovereign & Regulatory Environment									
Standalone Scorecard-indicated Outcome									Baa1
Support									
Nature and Terms of Explicit Support									
Nature and Terms of Implicit Support									
Scorecard-indicated Outcome									Baa1

[1] Information based on IFRS17 financial statements as of fiscal year ended December 31, 2023. [2] The Scorecard rating is an important component of the company's published rating, reflecting the standalone financial strength before other considerations (discussed above) are incorporated into the analysis.

Source: Moody's Ratings

## Ratings

Exhibit 8

Category	Moody's Rating
<b>ASR RE LIMITED</b>	
Rating Outlook	STA
Insurance Financial Strength	Baa1

Source: Moody's Ratings

© 2025 Moody's Corporation, Moody's Investors Service, Inc., Moody's Analytics, Inc. and/or their licensors and affiliates (collectively, "MOODY'S"). All rights reserved. CREDIT RATINGS ISSUED BY MOODY'S CREDIT RATINGS AFFILIATES ARE THEIR CURRENT OPINIONS OF THE RELATIVE FUTURE CREDIT RISK OF ENTITIES, CREDIT COMMITMENTS, OR DEBT OR DEBT-LIKE SECURITIES, AND MATERIALS, PRODUCTS, SERVICES AND INFORMATION PUBLISHED OR OTHERWISE MADE AVAILABLE BY MOODY'S (COLLECTIVELY, "MATERIALS") MAY INCLUDE SUCH CURRENT OPINIONS. MOODY'S DEFINES CREDIT RISK AS THE RISK THAT AN ENTITY MAY NOT MEET ITS CONTRACTUAL FINANCIAL OBLIGATIONS AS THEY COME DUE AND ANY ESTIMATED FINANCIAL LOSS IN THE EVENT OF DEFAULT OR IMPAIRMENT. SEE APPLICABLE MOODY'S RATING SYMBOLS AND DEFINITIONS PUBLICATION FOR INFORMATION ON THE TYPES OF CONTRACTUAL FINANCIAL OBLIGATIONS ADDRESSED BY MOODY'S CREDIT RATINGS. CREDIT RATINGS DO NOT ADDRESS ANY OTHER RISK, INCLUDING BUT NOT LIMITED TO: LIQUIDITY RISK, MARKET VALUE RISK, OR PRICE VOLATILITY. CREDIT RATINGS, NON-CREDIT ASSESSMENTS ("ASSESSMENTS"), AND OTHER OPINIONS INCLUDED IN MOODY'S MATERIALS ARE NOT STATEMENTS OF CURRENT OR HISTORICAL FACT. MOODY'S MATERIALS MAY ALSO INCLUDE QUANTITATIVE MODEL-BASED ESTIMATES OF CREDIT RISK AND RELATED OPINIONS OR COMMENTARY PUBLISHED BY MOODY'S ANALYTICS, INC. AND/OR ITS AFFILIATES. MOODY'S CREDIT RATINGS, ASSESSMENTS, OTHER OPINIONS AND MATERIALS DO NOT CONSTITUTE OR PROVIDE INVESTMENT OR FINANCIAL ADVICE, AND MOODY'S CREDIT RATINGS, ASSESSMENTS, OTHER OPINIONS AND MATERIALS ARE NOT AND DO NOT PROVIDE RECOMMENDATIONS TO PURCHASE, SELL, OR HOLD PARTICULAR SECURITIES. MOODY'S CREDIT RATINGS, ASSESSMENTS, OTHER OPINIONS AND MATERIALS DO NOT COMMENT ON THE SUITABILITY OF AN INVESTMENT FOR ANY PARTICULAR INVESTOR. MOODY'S ISSUES ITS CREDIT RATINGS, ASSESSMENTS AND OTHER OPINIONS AND PUBLISHES OR OTHERWISE MAKES AVAILABLE ITS MATERIALS WITH THE EXPECTATION AND UNDERSTANDING THAT EACH INVESTOR WILL, WITH DUE CARE, MAKE ITS OWN STUDY AND EVALUATION OF EACH SECURITY THAT IS UNDER CONSIDERATION FOR PURCHASE, HOLDING, OR SALE.

MOODY'S CREDIT RATINGS, ASSESSMENTS, OTHER OPINIONS, AND MATERIALS ARE NOT INTENDED FOR USE BY RETAIL INVESTORS AND IT WOULD BE RECKLESS AND INAPPROPRIATE FOR RETAIL INVESTORS TO USE MOODY'S CREDIT RATINGS, ASSESSMENTS, OTHER OPINIONS OR MATERIALS WHEN MAKING AN INVESTMENT DECISION. IF IN DOUBT YOU SHOULD CONTACT YOUR FINANCIAL OR OTHER PROFESSIONAL ADVISER.

ALL INFORMATION CONTAINED HEREIN IS PROTECTED BY LAW, INCLUDING BUT NOT LIMITED TO, COPYRIGHT LAW, AND NONE OF SUCH INFORMATION MAY BE COPIED OR OTHERWISE REPRODUCED, REPACKAGED, FURTHER TRANSMITTED, TRANSFERRED, DISSEMINATED, REDISTRIBUTED OR RESOLD, OR STORED FOR SUBSEQUENT USE FOR ANY SUCH PURPOSE, IN WHOLE OR IN PART, IN ANY FORM OR MANNER OR BY ANY MEANS WHATSOEVER, BY ANY PERSON WITHOUT MOODY'S PRIOR WRITTEN CONSENT. FOR CLARITY, NO INFORMATION CONTAINED HEREIN MAY BE USED TO DEVELOP, IMPROVE, TRAIN OR RETRAIN ANY SOFTWARE PROGRAM OR DATABASE, INCLUDING, BUT NOT LIMITED TO, FOR ANY ARTIFICIAL INTELLIGENCE, MACHINE LEARNING OR NATURAL LANGUAGE PROCESSING SOFTWARE, ALGORITHM, METHODOLOGY AND/OR MODEL.

MOODY'S CREDIT RATINGS, ASSESSMENTS, OTHER OPINIONS AND MATERIALS ARE NOT INTENDED FOR USE BY ANY PERSON AS A BENCHMARK AS THAT TERM IS DEFINED FOR REGULATORY PURPOSES AND MUST NOT BE USED IN ANY WAY THAT COULD RESULT IN THEM BEING CONSIDERED A BENCHMARK.

All information contained herein is obtained by MOODY'S from sources believed by it to be accurate and reliable. Because of the possibility of human or mechanical error as well as other factors, however, all information contained herein is provided "AS IS" without warranty of any kind. MOODY'S adopts all necessary measures so that the information it uses in assigning a credit rating is of sufficient quality and from sources MOODY'S considers to be reliable including, when appropriate, independent third-party sources. However, MOODY'S is not an auditor and cannot in every instance independently verify or validate information received in the credit rating process or in preparing its Materials.

To the extent permitted by law, MOODY'S and its directors, officers, employees, agents, representatives, licensors and suppliers disclaim liability to any person or entity for any indirect, special, consequential, or incidental losses or damages whatsoever arising from or in connection with the information contained herein or the use of or inability to use any such information, even if MOODY'S or any of its directors, officers, employees, agents, representatives, licensors or suppliers is advised in advance of the possibility of such losses or damages, including but not limited to: (a) any loss of present or prospective profits or (b) any loss or damage arising where the relevant financial instrument is not the subject of a particular credit rating assigned by MOODY'S.

To the extent permitted by law, MOODY'S and its directors, officers, employees, agents, representatives, licensors and suppliers disclaim liability for any direct or compensatory losses or damages caused to any person or entity, including but not limited to by any negligence (but excluding fraud, willful misconduct or any other type of liability that, for the avoidance of doubt, by law cannot be excluded) on the part of, or any contingency within or beyond the control of, MOODY'S or any of its directors, officers, employees, agents, representatives, licensors or suppliers, arising from or in connection with the information contained herein or the use of or inability to use any such information.

NO WARRANTY, EXPRESS OR IMPLIED, AS TO THE ACCURACY, TIMELINESS, COMPLETENESS, MERCHANTABILITY OR FITNESS FOR ANY PARTICULAR PURPOSE OF ANY CREDIT RATING, ASSESSMENT, OTHER OPINION OR INFORMATION IS GIVEN OR MADE BY MOODY'S IN ANY FORM OR MANNER WHATSOEVER.

Moody's Investors Service, Inc., a wholly-owned credit rating agency subsidiary of Moody's Corporation ("MCO"), hereby discloses that most issuers of debt securities (including corporate and municipal bonds, debentures, notes and commercial paper) and preferred stock rated by Moody's Investors Service, Inc. have, prior to assignment of any credit rating, agreed to pay Moody's Investors Service, Inc. for credit ratings opinions and services rendered by it. MCO and all MCO entities that issue ratings under the "Moody's Ratings" brand name ("Moody's Ratings"), also maintain policies and procedures to address the independence of Moody's Ratings' credit ratings and credit rating processes. Information regarding certain affiliations that may exist between directors of MCO and rated entities, and between entities who hold credit ratings from Moody's Investors Service, Inc. and have also publicly reported to the SEC an ownership interest in MCO of more than 5%, is posted annually at [ir.moody.com](http://ir.moody.com) under the heading "Investor Relations — Corporate Governance — Charter and Governance Documents - Director and Shareholder Affiliation Policy."

Moody's SF Japan K.K., Moody's Local AR Agente de Calificación de Riesgo S.A., Moody's Local BR Agência de Classificação de Risco LTDA, Moody's Local MX S.A. de C.V., I.C.V., Moody's Local PE Clasificadora de Riesgo S.A., and Moody's Local PA Clasificadora de Riesgo S.A. (collectively, the "Moody's Non-NRSRO CRAs") are all indirectly wholly-owned credit rating agency subsidiaries of MCO. None of the Moody's Non-NRSRO CRAs is a Nationally Recognized Statistical Rating Organization.

Additional terms for Australia only: Any publication into Australia of this document is pursuant to the Australian Financial Services License of MOODY'S affiliate, Moody's Investors Service Pty Limited ABN 61 003 399 657 AFSL 336969 and/or Moody's Analytics Australia Pty Ltd ABN 94 105 136 972 AFSL 383569 (as applicable). This document is intended to be provided only to "wholesale clients" within the meaning of section 761G of the Corporations Act 2001. By continuing to access this document from within Australia, you represent to MOODY'S that you are, or are accessing the document as a representative of, a "wholesale client" and that neither you nor the entity you represent will directly or indirectly disseminate this document or its contents to "retail clients" within the meaning of section 761G of the Corporations Act 2001. MOODY'S credit rating is an opinion as to the creditworthiness of a debt obligation of the issuer, not on the equity securities of the issuer or any form of security that is available to retail investors.

Additional terms for India only: Moody's credit ratings, Assessments, other opinions and Materials are not intended to be and shall not be relied upon or used by any users located in India in relation to securities listed or proposed to be listed on Indian stock exchanges.

Additional terms with respect to Second Party Opinions and Net Zero Assessments (as defined in Moody's Ratings Rating Symbols and Definitions): Please note that neither a Second Party Opinion ("SPO") nor a Net Zero Assessment ("NZA") is a "credit rating". The issuance of SPOs and NZAs is not a regulated activity in many jurisdictions, including Singapore. JAPAN: In Japan, development and provision of SPOs and NZAs fall under the category of "Ancillary Businesses", not "Credit Rating Business", and are not subject to the regulations applicable to "Credit Rating Business" under the Financial Instruments and Exchange Act of Japan and its relevant regulation. PRC: Any SPO: (1) does not constitute a PRC Green Bond Assessment as defined under any relevant PRC laws or regulations; (2) cannot be included in any registration statement, offering circular, prospectus or any other documents submitted to the PRC regulatory authorities or otherwise used to satisfy any PRC regulatory disclosure requirement; and (3) cannot be used within the PRC for any regulatory purpose or for any other purpose which is not permitted under relevant PRC laws or regulations. For the purposes of this disclaimer, "PRC" refers to the mainland of the People's Republic of China, excluding Hong Kong, Macau and Taiwan.

REPORT NUMBER 1420380

CLIENT SERVICES

Americas	1-212-553-1653
Asia Pacific	852-3551-3077
Japan	81-3-5408-4100
EMEA	44-20-7772-5454